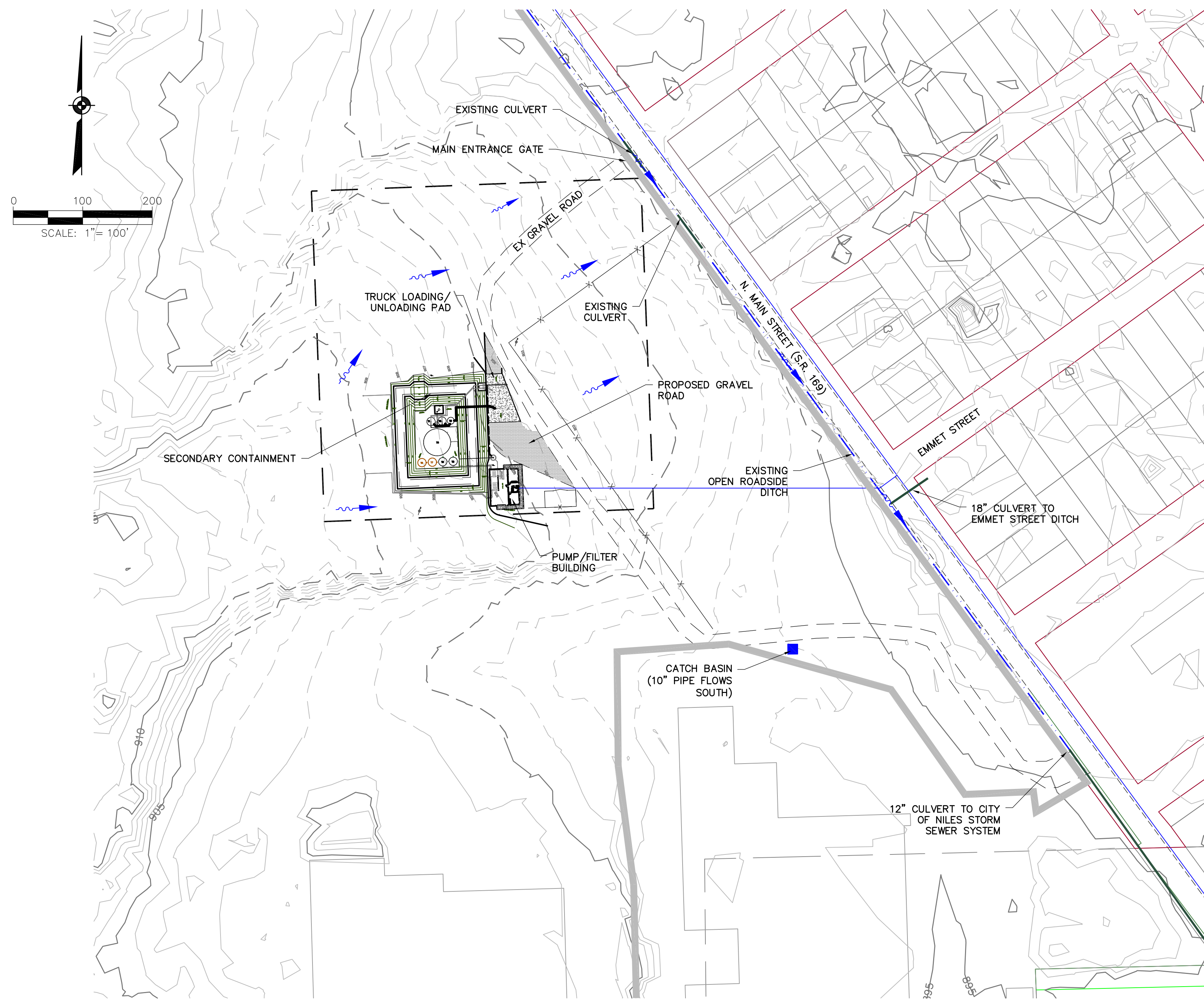
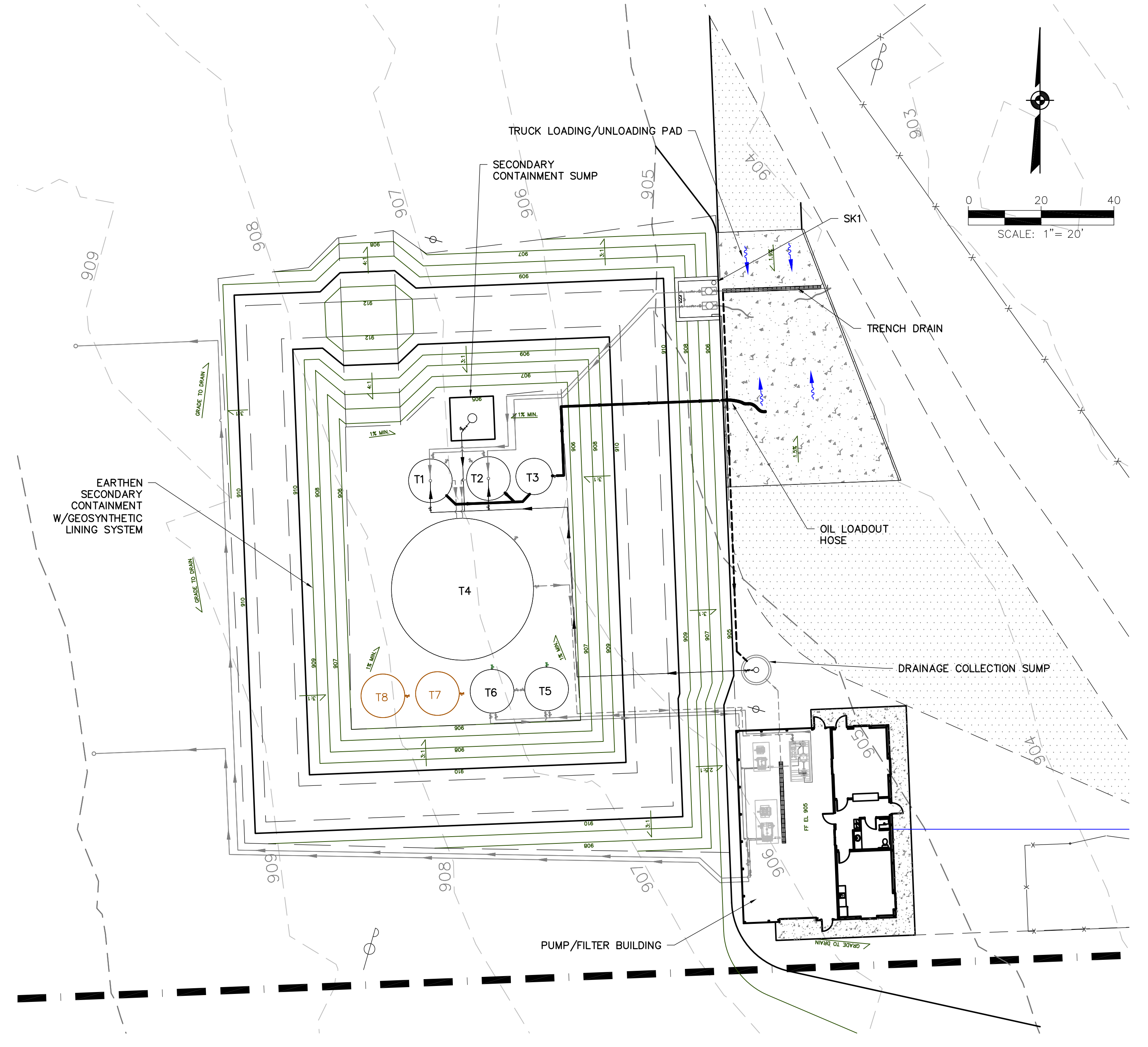


J:\AWM001-Niles Injection Well\dwg\SPCC Plan\AWM001-FIG2-SPCC 12-23-13.dwg - Feb 27, 2014 - 9:42am - lbyington



OVERALL SITE PLAN



ENLARGED SITE PLAN

**LEGEND**

- FACILITY OPERATIONAL BOUNDARY (LEASE AREA)
- 908 PRE-CONSTRUCTION CONTOUR
- 908 POST-CONSTRUCTION CONTOUR
- OIL PIPING (SCH 40 STEEL MIN)
- GRAVITY PIPING FROM OIL STORAGE/TRANSFER AREA TO DRAINAGE COLLECTION SUMP (SDR 35 PVC MIN)
- PRESSURE PIPING FROM DRAINAGE SUMP PUMPS TO OIL/WATER SEPARATORS (SCH 40 STEEL MIN)
- CONCRETE
- FENCE
- DIRECTION OF STORMWATER FLOW
- SK1 SPILL KIT NO. AND LOCATION

**TANK SCHEDULE**

TANK NO.	DESCRIPTION	VOLUME (BBL)
T1	OIL/WATER SEPARATOR	463
T2	OIL/WATER SEPARATOR	463
T3	OIL STORAGE	125
T4	RAW WASTEWATER STORAGE	4,000
T5	TREATED WASTEWATER STORAGE	400
T6	TREATED WASTEWATER STORAGE	400
T7	TREATED WASTEWATER STORAGE (FUTURE)	400
T8	TREATED WASTEWATER STORAGE (FUTURE)	400

**NOTES:**

- THIS DRAWING WAS PREPARED BY NORTH POINT ENGINEERING (NPE) USING TOPOGRAPHIC INFORMATION OBTAINED FROM FIELD SURVEY PERFORMED IN AUGUST, 2013 BY ADVANCED LAND MEASUREMENT, INC. OF BROOKFIELD, OHIO, LIDAR DATA OBTAINED FROM OSIP/OGRIIP DATABASE, AND FIELD RECONNAISSANCE BY NPE.

REVISIONS				
NUMBER	DATE	MADE BY	CHECKED BY	DESCRIPTION

DATE: 12-23-13  
 PREPARED BY: RTS  
 DRAWN BY: LMB  
 CHECKED BY: RTS  
 AWM001-FIG 2 SPCC



PREPARED FOR:  
 AWMS RT. 169, LLC  
 1732 STATE ROUTE 169  
 WEATHERSFIELD TOWNSHIP, OHIO 44446

AWMS RT. 169 SALT WATER INJECTION FACILITY  
 SPCC PLAN

FIGURE 2  
 SITE/FACILITY LAYOUT  
 WEATHERSFIELD TOWNSHIP, TRUMBULL COUNTY, OHIO